



The

March 2011

# BUZZWORD

West Sound Beekeepers Association <http://www.westsoundbees.org/>

Proudly serving bees, their keepers, and the public in Kitsap County, WA

(Editor's note: I'm working on the interactive newsletter!)

## Refreshments:



## Meeting Schedule:

### Bee-ginning Beekeeping

#### Class

6PM Tuesday 15 Mar 2011

6PM Tuesday 5 April 2011

### Regular Meeting

7PM Tuesday 15 Mar 2011

### Steering Committee

#### Meeting

7 PM Tuesday 05 April 2011

### Queen Rearing Group

Meets after the Steering  
Committee

Meetings at Stedman's

Beekeeping Supplies in  
Silverdale

## March 15 6 PM Bee-ginner's Beekeeping Class

Swarms and Swarming. David Mackovjak

## March 15 7 PM Regular Meeting

### Program:

David Mackovjak presents

## Queen Rearing

## April 5 6 PM Bee-ginner's Beekeeping Class

Spring management and pollination. Warren Carlson

## What's inside:

Minutes.....	2
Editor's Corner.....	2
President's Message.....	3
Queen Rearing Group Update.....	4
Treasurer's Report.....	6
Nosema Ceranae.....	7
Membership Renewal Coupon.....	Last Page

## Apiary Update

On other news, on Sunday 20 Feb the weather was perfect and I met with the Apiary Manager Jason Deal to take a look at our club's hives. Unfortunately most of them died over the winter. The top bar hive had a small cluster and we took two other small struggling hives and combined them together into a split deep and fed them to hopefully get them through until the nectar flow begins. The best hive was Paul's son's hive. It appeared to be doing very well. The major lesson learned is in the fall the hives need to be distributed to members to make sure they are looked after during the winter months.....the old adage "Out of sight out of mind" is unfortunately very true. The WSBA approved the purchase of five hives for the club's apiary - 2 Carniolan and 3 Italians. -**David Mackovjak**



Jason knee deep in Winter's aftermath

# WSBA Business Meeting Minutes March 1, 2011

**Officers in attendance:** TJ Jorgenson, President; David Mackovjak, Vice President; Kim Redmond, Treasurer; and Christine Torres, Secretary

Called to order 7 p.m.

## Old Business:

- Treasurer report handed out.
- General meeting presentation topic schedule set.
- Queen Rearing Group I.I. Proposal Approved provisionally. WSBA will reimburse the cost of the I.I. equipment not locally available, provided at least 5 people per year for 3 years are trained to use it, and...
- the Queen rearing Group will generate \$500 revenue each year for 3 years.
- WSBA will pay \$100 toward enrollment in Sue Coby's class April 2011.

## Education Fund Policy set.

- Class must be pre-approved by steering committee
- Applicant must be an active member of one (1) year or more, and give presentation to club after attending class.
- Maximum tuition reimbursed \$100 per person, per event, per year. Total yearly amount \$200.
- Will need to include fund in future budget.

## New Business:

- Club will purchase five (5) packages bees (2 expensive variety, 3 lower cost variety)
- Check if last year's grant winner is owed a package of bees.
- WSBA will staff an information table/booth at Stedman's during package day -more volunteers needed

Meeting adjourned through attrition around 10 pm

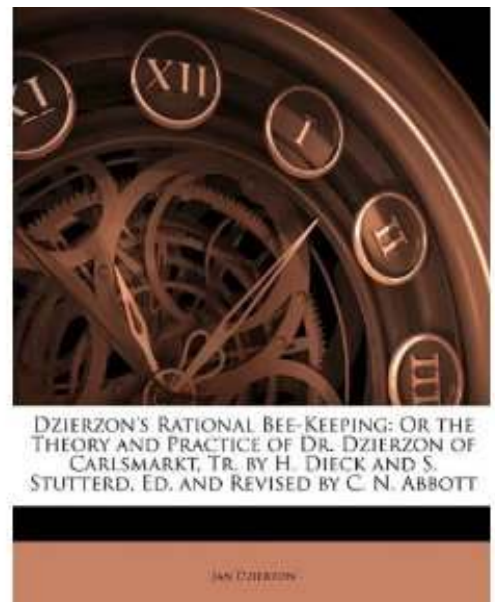
## Editor's Corner

"The carrying out of the dead is cared for by the bees; but many living bees are lost through it, by falling into water, or on to the cold ground, and chilling before they can disengage themselves from their burdens. It is preferable then, to save them this labour, which the bee-keeper can do in a few seconds, since by the help of a feather, and a long wire hook, everything that is lying on the floor may be easily drawn out and removed, even from hives closely filled with comb."

Google Books: Dzieron's Rational Beekeeping 1878; English version 1882 <http://tinyurl.com/4sb6exd>

One of our more experienced members, Dennis Heeney, has been saying much the same thing for years. He would further say that it makes for a drier hive and allows the bees to get in and out of the hive when they need to. During the recent cold weather bees have had to remain in tight cluster for days at a time. These bees are no spring chickens, if you know what I mean. Many die every day due to old age, if from nothing else. That means dead bodies falling down to the bottom board and in a large colony they can pile up so deep the bees can't get out at all. You can quite easily lose the whole colony!

Dzieron's theories make interesting reading, though some of his ideas will seem quite fantastical to a modern reader. Still, you will usually find worthwhile ideas you have not encountered before, while reading almost any beekeeping book. Dzieron's Rational Beekeeping will set you back \$25-\$35 if you want to actually own a copy of it. You can also read beekeeping books on line for free, borrow them from our Association Library, or buy them readily from a number of sources. My Advice: Don't let the bottomboard of your mind or your hives get clogged up. Keep your entrances clean and allow bees and ideas to have ready access.



# Message from the President

First, let me just say thanks to our esteemed member George Purkett for a fantastic presentation at the last meeting of WSBA. The room was packed to capacity, and the crowd enjoyed his talk tremendously. It was a pleasure to see so many new people stick around for the talk, and the comments afterward demonstrated just how valuable the experience of our established membership is! So, my hats off to George for his effort and taking his time to present an enjoyable and informative talk!

Second, WSBA has now entered the world of "Social Networking" with our brand new Facebook page. If you haven't visited it yet, go to Facebook and search for "West Sound Beekeepers Association (WSBA)". The more people we have, the more we can do with it, so I encourage all of you web savvy beekeepers to come and check it out! It's a great way to get information out the public and connect with other local beekeepers for news, help, advice, or just a sympathetic ear to bend.

Third, "Package Day" at Stedmans is coming up in April! If you are a new beekeeper, just getting your start with packages this year, time is running out for you to reserve you packages with Stedmans. On Package Day itself, WSBA will be on hand to provide what ever information we can, answer any questions we are capable of answering, and have volunteers doing demonstrations on how to hive a package. Package day is always busy and a blast with everyone excited about getting their bees!

I hope all of your bees are doing well as we emerge from the winter, and that any losses were at a minimum. As the longtime members of WSBA keep advising, Keep the feed on. I hope for a perfect spring with no cold snaps (knock on wood) and happy happy bees!



## **Stedman's Bee Supplies**

3763 NW Anderson Hill Rd  
Silverdale, WA 98383

**(360) 692-9453**

**Stedman's has  
All Kinds of  
Beekeeping  
equipment,  
Package Bees,  
Honey,  
And a fine  
Gift Shop!**

***Come on by!***

# WSBA Queen Rearing Group Update

**Purpose:** The Queen Rearing group is to provide an opportunity for members of WSBA a venue to learn and explore the art of queen rearing and produce quality queens.

## 2011 Goals for the Queen Rearing group of West Sound Beekeeping Association (WSBA):



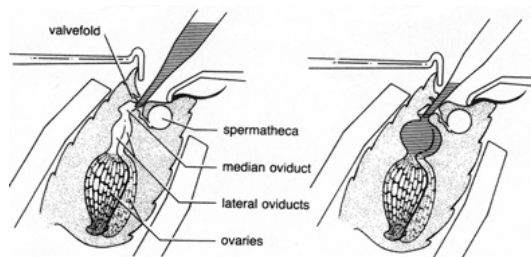
1. Explore and document different physical methods of queen rearing
2. Educate both the Queen Rearing group and the WSBA on queen rearing
3. Provide quality queens to the Queen Rearing group and WSBA
4. Investigate and conduct hygienic testing
5. Explore drone management methods
6. Invite at least two other local beekeeping associations to our meetings
7. Artificially inseminate a queen (stretch goal)

### Paul Lundy showing how to properly introduce a new queen

The Queen Rearing group held their third meeting of the 2011 year on Tuesday 3/1/2011. The Queen Rearing group meets on the first Tuesday of the month following the WSBA business meeting held at Stedmans. The business meeting starts at 7 PM at and the Queen Rearing meeting will start at aprox 8 pm or after the business meeting ends.

The Queen Rearing group presented a proposal for George Purkett to attend the "Instrumental Insemination and Bee Breeding" workshop taught by Susan Cobey at the UC Davis in mid April 2011. The motion was passed. Additionally, there is equipment required to be purchased for both the course and the follow-on queen rearing program here at WSBA. The list of equipment and aprox associated costs are provided below:

Insemination Instrument	\$2100
Harbo Syringe	\$500
Microscope parts	\$40
CO2 tank w/gas	\$80
CO2 regulator	\$80
Miscellaneous items	\$100



This equipment purchase was voted on and approved with the following stipulation for the queen rearing program:

- 1) The queen rearing group will train at least 5 personnel on the techniques of using the equipment to instrumental insemination queens for the next three years.
- 2) The queen rearing group will generate at least \$500/year for the next three years to offset the costs of the queen rearing equipment.

**Lecture Schedule:** We outlined our Queen Rearing lecture schedule and the following lectures will be presented during our upcoming meetings. We didn't get to the lecture for this month so we are going to shift all the lectures to the right one month.

- 5 Apr – Drone Management – Jim Carlson**
- 3 May – Instrumental Insemination – George Purkett**
- 7 Jun – Cloake Board and grafting – David Mackovjak**
- 5 Jul -- Hygienic Testing – Paul Lundy**

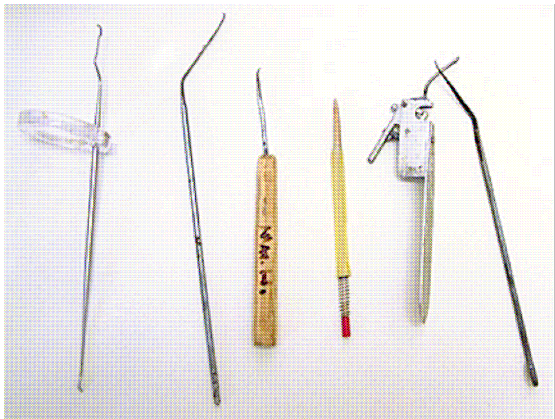
**Hands-on-Demonstrations:** A tentative schedule of hands-on-demonstrations and skill events was also discussed and confirmed (dates subject to weather and hive strength)



- Thurs, 7 Apr 11 – Cloaking setup demonstration, 6 pm Stedmans
- Sunday, 10 Apr 11 – Queen grafting demonstration, 1-3 pm Stedmans
- Tuesday, 19 Apr 11 – Queens handed out, 6-7 pm Stedmans

- Thurs, 5 May 11 – Cloaking setup demonstration, 6 pm Stedmans
- Sunday, 8 May 11 – Queen grafting demonstration, 1-3 pm Stedmans
- Sunday, 17 May 11 – Instrumental Insemination demo, 1-3 pm Stedmans

- Thurs, 9 Jun 11 – Cloaking setup demonstration, 6 pm Stedmans
- Sunday, 12 Jun 11 – Hygienic Testing & Queen grafting demo, 1-3 pm Stedmans
- Sunday, 19 Jun 11 – Instrumental Insemination demo, 1-3 pm Stedmans



**Left:** A selection of different grafting tools. There are many choices for the beekeeper. The author prefers the Chinese grafting tool, which is fourth from the left. It has a small flexible tongue-like tip, which easily slips under a young larva, allowing you to lift it on a bed of royal jelly. To deposit it in the queen cup, simply depress the red plunger and a bamboo nib gently nudges the larva into the queen cup.

Thanks and looking forward to seeing a great turnout at our next Queen Rearing meeting on 5Apr when we will be discussing drone management how to graft queen cells using the equipment above. This will prep us for our grafting demonstration the following Sunday 10 Apr. Come join all the

fun!!



The Queen Rearing group is open to all members who are interested in learning about the art of queen rearing or would just like to learn more about bee keeping. To be included in queen rearing correspondence please send me your name, phone number and email address.

David Mackovjak  
Queen Rearing group leader  
[trimack@prodigy.net](mailto:trimack@prodigy.net)  
360-340-0381



So, Where are we exactly?

# February 2011 Treasurer's Report

In February 2011 we had 19 new members joining us via the beginner beekeeping class. We finished up the month with 53 paid members.

Thank you to Kenneth Howe Jones for his cash donation to the association. That contribution was directed to the Queen Rearing Program which is extremely important to all of us beekeepers. Thanks also to Anne Oeste for her cash donation which was directed to the Library Fund – a valuable and enduring asset to our association.

Details are as follows:

## **Income for February 2011 was:**

Library Fund Contribution ~ \$1  
Beginner Study Guides ~\$180  
Queen Rearing Fund Contribution ~ \$24  
2011 Dues ~ \$549  
Interest ~ \$.49

**TOTAL INCOME: \$754.49**

## **Expenses for February were:**

Renew Non-Profit License with the State ~ \$10  
Beginner Beekeeping book liability to WASBA ~ \$220 (paying to-date)  
Newsletter expenses ~ \$56.58  
Beekeeper of the Year Award plaque engraving ~ \$21.18  
2011 door prize gift certificates ~ \$180.00  
Office & meeting supplies ~ \$28.72  
Membership dues to WASBA ~ \$53 (\$1 per member, annually)

**TOTAL EXPENSES: \$569.48**

<b>Checking account balance @ 2/28/2011 ~</b>	<b>\$3,146.45</b>
<b>Savings account balance @ 2/28/2011 ~</b>	<b><u>\$6,380.25</u></b>
<b>Total Cash on Hand @ 2/28/2011 ~</b>	<b>\$9,526.70</b>

**Undeposited Funds @ 2/28/2011 ~ \$ 10.00 (study guide payment received but not deposited by 2/28/2011)**

**2011 Scholarship Liability (Warren Carlson) ~ \$200**  
**The WSBA Scholarship Fund value @ 2/28/2011 = \$508**

## **DONATIONS**

If you, or someone you know, would like to make a directed donation to the scholarship, libraries, or queen rearing funds, simply indicate the fund on the check and we'll make sure the money is allotted appropriately. General donations that support all aspects of the Association are also welcome!

## **MEMBERSHIP DUES**

Those of you who haven't had the chance to pay your 2011 dues, now is a great time to do so to maintain your membership. For a mere \$24 per household, you'll support honey bee research at the State and local levels, continue to receive the timely and informative Buzzword newsletter, be a part of an interesting and fun group, AND support your association's mission to Build Better Beekeepers and a More Informed Public. Wow! Where else can you get such a great return on your investment?

Bee~happy,  
Kim Redmond  
Treasurer



## Nosema ceranae

Dr. Eric Mussen UC Davis Jan/Feb Newsletter\*

Dr. Ingemar Fries, of Sweden, gave an overview of what we know and don't know about *Nosema ceranae* at the January Mega-Meeting in Galveston, TX. Even though *N. ceranae* arrived in Sweden in 2007, the predominant nosema species is still *N. apis*, but why? In other locations, *N. ceranae* has displaced *N. apis*. With inoculations containing mixed spores, *N. ceranae* produces spores in about four days, while *N. apis* takes about six. Maximum numbers of spores are pretty similar. Caged bee experiments show little difference in virulence.

Susceptibility of spores to cold was quite different between the temperate zone *N. apis* and tropical zone *N. ceranae*. Refrigeration and freezing killed *N. ceranae* spores. Freezing to minus 80 degrees Fahrenheit did not kill *N. apis* spores. In fact, cold treatments "primed" *N. apis* spores to germinate better. In the bees, *N. ceranae* could develop over a wider temperature range than could *N. apis*. There are still questions about strain differences and whether or not pesticides and virus pressures will impact nosema development.

Brenna Traver, Virginia Polytechnic Institute, reported that researchers in Virginia found *N. ceranae* in 70 percent of colony samples and only 2.5 percent *N. apis*. They found *N. ceranae* in brood food taken from worker cells. Taking a closer look at drones, they found that drones began drifting at the age of six or seven days. Drifting increases with age until the drones reach 15 days. Then, they settle down and hang around home. Using PCR (analyzes for nosema DNA), they found peak levels of infections in workers and drones from March through June. Levels were highest in hive drones in June, but highest in flying drones in July. In a small number of instances, PCR suggested that pupae can become infected before emerging from their cells. **(continued on back page)**

Grace Mulholland, also from Virginia Tech, examined bees for nosema infections using spore counts and PCR. She found that spore counts miss about 50 percent of low-level infections. In three different 100 individual bee samples, she found 82, 18, and 44 percent of the bees infected by PCR. By spore count, those same bees were 60, 8, and 4 percent infected, respectively. Can this be a reason why we tend not to get nosema treatments applied in a timely fashion, using spore count criteria? Could this be the reason that colonies in Spain collapse completely by the time that spores can be found in the brood nest workers?

Paul Rhodes and cooperating researchers at the University of Tennessee also found, using inoculation studies, that numbers of spores do not necessarily reflect the physiological condition of the bees. The researchers fed Nosevit®, thymol, Honey B Healthy®, and fumagillin to young, sporefree worker bees. The caged bees were inoculated with 40,000 spores per bee. The bees remained on medicated syrup from day three to the end of the 23-day study. Dead bees were removed from the cages daily, and some bees were sacrificed for spore counts.

At 23 days, the mortality, life spans, etc. for the *N. ceranae*-fed and *N. apis*-fed bees were the same. Thymol and Honey Bee Healthy were best at extending lives, with fumagillin next, and Nosevit of little value. Spore counts were way up in the controls and Honey Bee Healthy treatments (180 million spores per bee). They were reduced, somewhat, by thymol and Nosevit, but fumagillin knocked the counts way down. Since bees consuming Honey Bee Healthy lived longest with highest spore loads, the product is having a positive effect on the bees other than interfering with nosema propagation.

**\*The Jan/Feb newsletter had many other interesting articles on Queen Quality, Pesticides, Varroa Mites, Pheromone effects and more! It is published bimonthly, in February, April, June, August, October and December. If you wish to have this newsletter sent directly to your e-mail address, when it is published, please follow the instructions below.**

In your Internet browser, put in the URL <https://lists.ucdavis.edu/www/subscribe/ucdavisbeenews> When the page opens, type the e-mail address, to which you wish to have the newsletter sent, into the little box that says "your e-mail address." Then, simply click on the SUBMIT button.



**Willows –A good source of Spring pollen**

---

**Yes! I want to be a member of West Sound Beekeepers' Association during 2011. I have enclosed a check payable to: West Sound Beekeepers Association (a registered non-profit association.)**

**Check one:**

- \$24 annual household membership dues (one Membership covers the whole family)**
- \$34 Bee-ginner class fee (\$24 membership dues + \$10 study guide OPTIONAL)**

**NAME(S):** \_\_\_\_\_

**MAILING ADDRESS:** \_\_\_\_\_

**PHONE:** \_\_\_\_\_

**EMAIL ADDRESS (for newsletter):** \_\_\_\_\_

**I am including an additional donation to West Sound Beekeepers Association : Amount \$** \_\_\_\_\_

Personal Information is confidential and will not be shared or sold

**Please return to:  
Kim Redmond  
WSBA Treasurer  
P.O. Box 536  
Chimicum, WA 98325**