

Queen Rearing in the Pacific Northwest 2012

Join us for our Queen Rearing course July 14 & 15, 2012
9:00am-4:30pm here at our West Sound Beekeeping
Association located at Stedman Bee Supplies.

Queen rearing in the Pacific Northwest has its own unique challenges. We will discuss and provide training with emphasis on cell starters, cell finishers and mating nucs. Each student will be taught to graft appropriate-aged larvae and start queen cells. There will be considerable discussion on queen mating, drone production, drone saturation, chemical free beekeeping, local mating schemes, use of survivor stock, basic bee genetics, colony evaluation, and much more. Use of queen cells, virgin queens and queen banks will be explained.



Registration fee: \$125 for the first person, \$100 for a second person from the same family. The fee includes all instruction, break materials, a new book by Dr. Connor on queen rearing, and a starter kit including grafting frame, grafting bars, grafting tool, cell cups and a WSBA membership and lunch for both days. Everything you need to get you started raising queens in your own apiary!!



Queen Rearing in the Pacific Northwest 2012

Saturday & Sunday July 14 & 15, 2012
Silverdale, Washington

Learn about:

Queen Rearing in the Pacific Northwest

- Introduction to Queen Rearing
- Biology of Queens
- Equipment Used
- Record Keeping
- Choosing Breeder Stock
- Drones
- Preparing Finishing Colony
- Preparing Swarm Box
- Grafting (hands on)
- Alternative Methods
- Queen Mating
- Marking Queens
- Practicing what you have learned

Agenda

Saturday, July 14, 2012

0830-0900	Registration / Check in
0900-1200	Class
1200-1300	Lunch
1300-1630	Hive Manipulations and Grafting

Sunday, July 15, 2012

0830-0900	Registration / Check in
0900-1200	Class
1200-1300	Lunch
1300-1630	Hive Manipulations and Apiary events

Instructors:

David Mackovjak, Queen Rearing Chairman, West Sound Beekeepers Association

George Purkett, West Sound Beekeepers Association

Guest Speakers from the West Sound Beekeepers Association and from other areas of the beekeeping industry.

Registration: Class is limited to 15 students. We expect this class to fill early and early registration is recommended. Please check our website for availability -- <http://www.westsoundbees.org> . Questions or concerns can be addressed to David Mackovjak, trimack@prodigy.net or 360-340-0381

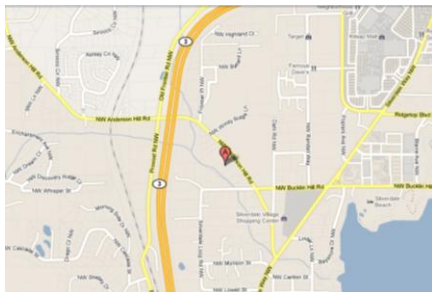
Download Registration form (pdf): www.westsoundbees.org

Refunds Policy: \$75.00 will be refunded to participants who cancel in writing prior to July 1, 2012.

Cancellations: Send cancellations to Selena Clements , WSBA Treasurer, 3268 Chase Rd Port Orchard, WA 98366 , or by email – treasurer@westsoundbees.org.

Location: West Sound Beekeeping Association located at Stedman's Bee Supplies, 3763 NW Anderson Hill Rd Silverdale, WA 98383

Stedman's Bee Supplies:



click
for
larger
image

Silverdale, WA:



click for larger image

Queen Rearing in the Pacific Northwest 2012

Registration Form

July 14 & 15, 2012
Silverdale, Washington

Please use a separate form for each registration.

Method of Payment: check or money order

Registration Fee:

Enclosed is a check or money order.

\$125 per person

\$100 for a second person from the same family

Name _____

Address _____

City _____

State _____ Zip _____

Phone _____

E-mail _____

Complete the registration form above, include payment and mail to:

Selena Clements
WSBA Treasurer
3268 Chase Rd
Port Orchard, WA 98366